

ALASKA DIVISION OF HOMELAND SECURITY & EMERGENCY MANAGEMENT



SITUATION REPORT 24-291 • October 17, 2024

Toll-Free 1.800.478.2337

Anchorage Area 907.428.7000

SEOC 907.428.7100

<p><u>SEOC Preparedness Level</u> Level 1-Routine Operations</p>	<p>http://ready.alaska.gov</p>	<p><u>National Terrorism Advisory System:</u> Read the NTAS Bulletin here</p>
<p><u>Maritime Security (MARSEC)</u> Level:1- Minimum Appropriate Security Measures</p>	<p>WHO Novel Coronavirus Pandemic (COVID-19): 2019 Novel Coronavirus</p>	<p><u>Alaska Military Installation Force Protection</u> <u>Level:</u> FPCON Bravo</p>

(Significant changes from previous situation reports are red.)

Significant Issues:

Juneau Glacial Flood – Federal Disaster Declaration

- The President has declared a disaster for the City and Borough of Juneau, qualifying for Public Assistance (PA) and Individual Assistance (IA).

Mt. Spur Volcano – Status: Yellow

- The Alaska Volcano Observatory (AVO) reports signs of instability at Mt. Spur in Cook Inlet. However, an eruption is not believed to be imminent. SEOC has notified the Department of Environmental Conservation (DEC) and the Department of Health (DOH).

National Hurricane Support – Current Deployments:

- North Carolina: Two SEOC Operations and Logistics personnel are deployed to the State Emergency Operations Center under EMAC.
- North Carolina: A team of four SEOC personnel is providing support at the county level in Henderson County, focusing on distribution points near Asheville.

FAA Operations Brief

- SEOC held a disaster operations discussion with the Acting Director of the FAA System Operation Security under the Federal Aviation Administration’s Air Traffic Organization.

Department of Health (DOH):

For current information, see: <https://health.alaska.gov/dph/Pages/default.aspx>
<https://health.alaska.gov/dph/Emergency/Pages/prepared/default.aspx>

NTAS Bulletin:

The U.S. Department of Homeland Security issued an updated National Terrorism Advisory Bulletin on May 24, 2023. The current and expired bulletins can be viewed at the below link.

<https://www.dhs.gov/national-terrorism-advisory-system>

Travel Alerts and Conditions:

For current driving conditions, dial 511 or visit: <https://511.alaska.gov/>

Barry Arm Landslide / Tsunami Risk:

For the latest information on the Barry Arm Landslide and Tsunami risk, click here:

<https://dggs.alaska.gov/hazards/barry-arm-landslide.html>

Earthquakes:

United States Geological Service (USGS) Earthquake Information: <http://earthquake.usgs.gov/>

National Tsunami Warning Center: <http://tsunami.gov/>

Alaska Volcanoes:

Great Sitkin Alert Level: Watch and Aviation Color Code: **Orange**

Mt. Spurr Alert Level: Advisory and Aviation Color Code: **Yellow**

For Alaska Volcano updates, go to: <https://www.avo.alaska.edu/>

Air Quality Index (AQI) Advisories:

For the most up-to-date Air Quality Index Advisories:

<http://dec.alaska.gov/Applications/Air/airtoolsweb/Home/Index>

Spills of Oil and Hazardous Substances:

The Alaska Division of Environmental Conservation (ADEC) Spill Prevention and Response page is located at: <https://dec.alaska.gov/spar/>

Alaska Cyber Security Information:

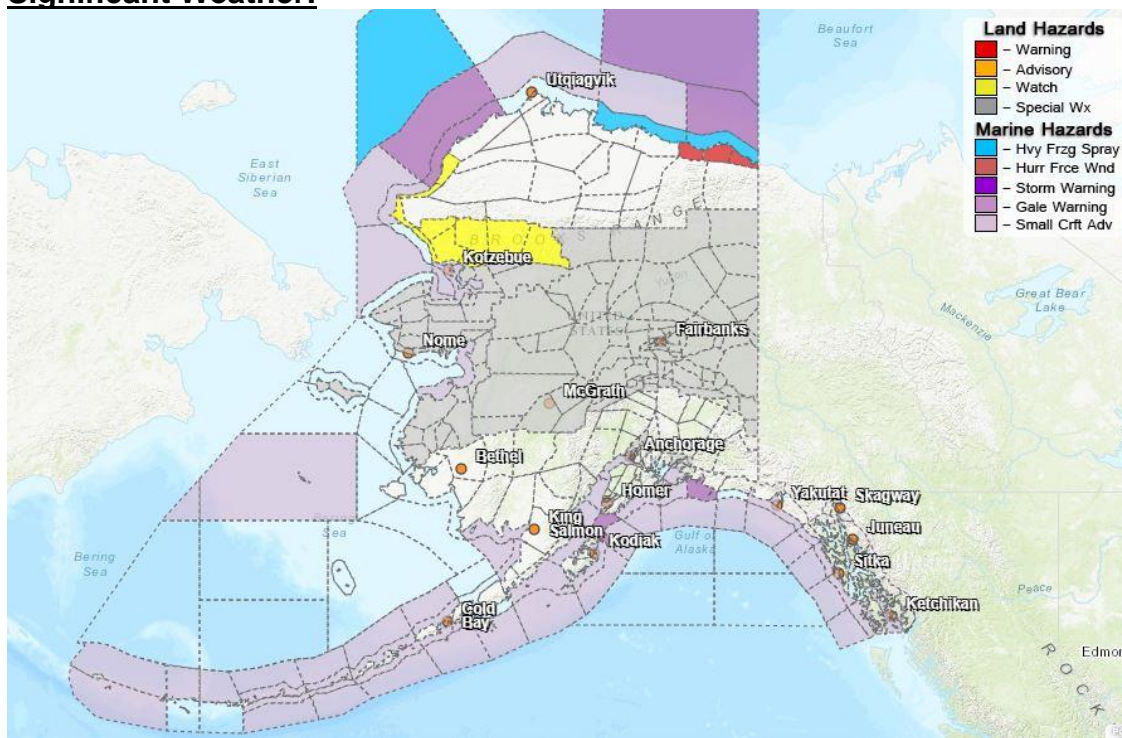
State Employees may sign up for cybersecurity notifications and alerts at:

<https://oit.alaska.gov/security>

Cybersecurity and Infrastructure Security Agency (CISA)-Cybersecurity Services and Tools:

www.cisa.gov/free-cybersecurity-services-and-tool

Significant Weather:



Special Weather Statement:

- **South Slopes of the Western Brooks Range, Noatak Valley, Kivalina and Red Dog Dock, Lower Kobuk Valley, Baldwin Peninsula, Northern Seward Peninsula, Upper Kobuk Valleys, Shishmaref, Bering Strait Coast, Southern Seward Peninsula Coast, Interior Seward Peninsula, Eastern Norton Sound and Nulato Hills, Yukon Delta Coast, Lower Yukon River, St Lawrence Island, Lower Koyukuk Valley, Middle Yukon Valley, Lower Yukon and Innoko Valleys, North Slopes of the Western Alaska Range, Upper Kuskokwim Valley-** Bering Sea storm Sunday through early Wednesday.
- **South Slopes Of The Eastern Brooks Range; South Slopes Of The Central Brooks Range; Upper Koyukuk Valley; Dalton Highway Summits; Yukon Flats; White Mountains and High Terrain South of the Yukon River; Forty mile Country; Upper Tanana Valley; Delta Junction; Upper Chena River Valley; Tanana Flats; Eielson AFB and Salcha; Goldstream Valley and Nenana Hills; Chatanika River Valley; Two Rivers; Fairbanks Metro Area; Nenana; Central Interior; Northern Denali Borough; Southern Denali Borough; Eastern Alaska Range North of Trims Camp; Eastern Alaska Range South of Trims Camp** - Winter storm likely Sunday night through midweek.
- **Matanuska Valley, Northeast Prince Williams Sound** - Strong winds through Saturday.

High Wind Watch:

- **Western Arctic Coast, Kivalina and Red Dog Dock.** From Sunday afternoon till Sunday Night.

Blizzard Warning:

- **Eastern Beaufort Sea Coast** – Till 4pm Friday.

Winter Storm Watch:

- **Noatak Valley, South Slopes of the Western Brooks Range** – From Sunday afternoon till Monday night.

For more information and the most current Weather, Watches/Warning/Advisories go to:

<https://www.weather.gov/arh/>

The Next Situation Report will be on **October 21, 2024**. An interim report will be prompted by a significant change in the situation or the threat level. This report is posted on the internet at

<https://ready.alaska.gov/sitrep>.

To register for email distribution, **PLEASE** go to:

<http://list.state.ak.us/mailman/listinfo/dhsem.situation.report>.

Direct questions regarding this report to the SEOC at 907-428-7100 or seoc@alaska.gov.